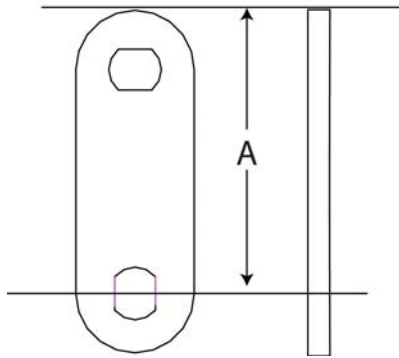


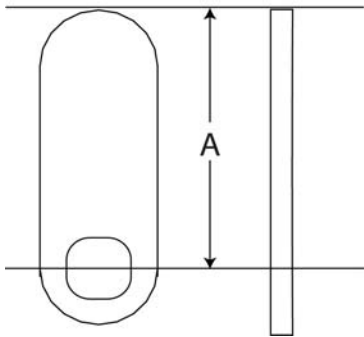
Locking Cams

Straight Cam-Double Holes



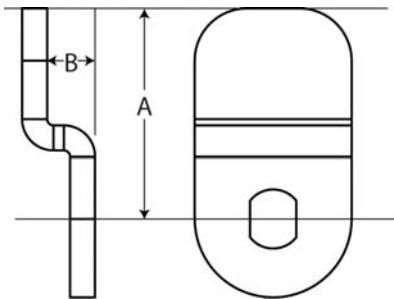
LSI Part No	A-Dimension
50708	.75"
50709	.875"
50700	1"
50714	1.125"
50704	1.250"
50706	1.500"
50712	2"

Straight Cam-SB Hole



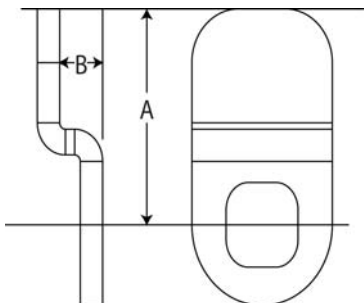
LSI Part No	A-Dimension
50910	.75"
50912	.875"
50900	1"
50902	1.125"
50906	1.250"
50908	1.500"

Offset Cam-Standard Hole



LSI Part No	A-Dimension	B-Dimension
50758	1.00"	.07"
50756	1.00"	.229"
50760	1.00"	1.125" Horr Hole
50754	1.125"	1.125"
50752	1.250"	.250" Horr Hole
50762	1.125"	1.250" Horr Hole

Offset Cam-SB Hole



LSI Part No	A-Dimension	B-Dimension
50860	1-1/8"	1/8"
50850	1-1/8"	1/4"
50856	1-1/4"	1/16"
50858	1-1/4"	3/8"
50854	1-1/2"	3/8"