



## Cam Locks



Abloy® uses a unique disc locking principle, making the lock virtually pick-proof. There are no pins or springs, which in other lock mechanisms can malfunction through wear, dirt, moisture, corrosion or freezing.

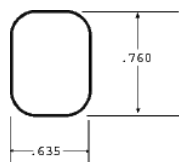
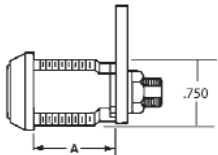
For maximum protection against drilling the first disc is hardened steel and free rotating.

All Abloy® Exec cam locks are key controlled with US patented.

All Abloy® keys are constructed of nickel silver which does not wear the inner parts of the cylinder.

| LSI Part No. | "A"    | Material | Type |
|--------------|--------|----------|------|
| AB3343E      | 3/4"   | Steel    | Exec |
| AB3373E      | 3/4"   | Brass    | Exec |
| AB3375E      | 7/8"   | Brass    | Exec |
| AB3377E      | 1 1/8" | Brass    | Exec |

All cam locks are also available in the classic style



Mounting Hole

### Rotation and Keypull

- 1 = 90 Clockwise 1 Keypull
- 2 = 90 Clockwise 2 Keypulls
- 3 = 180 Clockwise 1 Keypull
- 4 = 180 Clockwise 2 Keypulls

When Ordering please specify the "A" dimension (length) and the rotation and keypull.

6025 Cinderlane Parkway - Orlando Florida 32810

407-298-9895 - 800-657-LOCK (5625) - Fax: 800-895-0706 - sales@lockingsystems.com - www.lockingsystems.com