

DuraCam® Cam Locks

medeco
HIGH SECURITY LOCKS

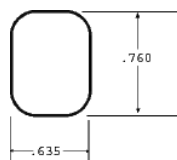
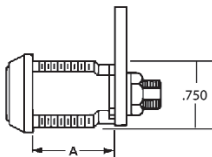


DuraCam® comes with a horizontal keyway that produces smoother action with a thick top cut key which is guaranteed for life. The **DuraCam®** line is a leader in gaming protection.

DuraCam®II has the same key style as the **DuraCam®**, however the **DuraCam®II** is designed as a removable core cam lock. This enables you to make an instant lock change whenever you need to.

LSI Part No.	"A"	No. of Pins	Material	Type
ME-8010	5/8"	4	Brass	DuraCam®
ME-8020	1 1/8"	5	Brass	DuraCam®
	5/8"	4	Brass	DuraCam®II
ME-8030	1 1/8"	4	Brass	DuraCam™II

DuraCam® cylinders can be made 90 or 180 degree rotation
DuraCam®II locks are right and left hand specific - please specify



Mounting Hole

Rotation and Keypull

- 1 = 90 Clockwise 1 Keypull
- 2 = 90 Clockwise 2 Keypulls
- 3 = 90 Counterclockwise 1 Keypull
- 4 = 90 Counterclockwise 2 Keypulls
- 5 = 180 Clockwise 1 Keypull
- 6 = 180 Clockwise 2 Keypulls
- 7 = 180 Counterclockwise 1 Keypull
- 8 = 180 Counterclockwise 2 Keypulls

When Ordering please specify the "A" dimension (length) and the rotation and keypull.